

CECP Accelerate Community: Systemic Investments in Equity, Talent, and Tech

KAMAU BOBB

IMARA CONSULTING

2 OCTOBER 2018



Operationalizing Equity in STEM

people

students
teachers
communities
employees

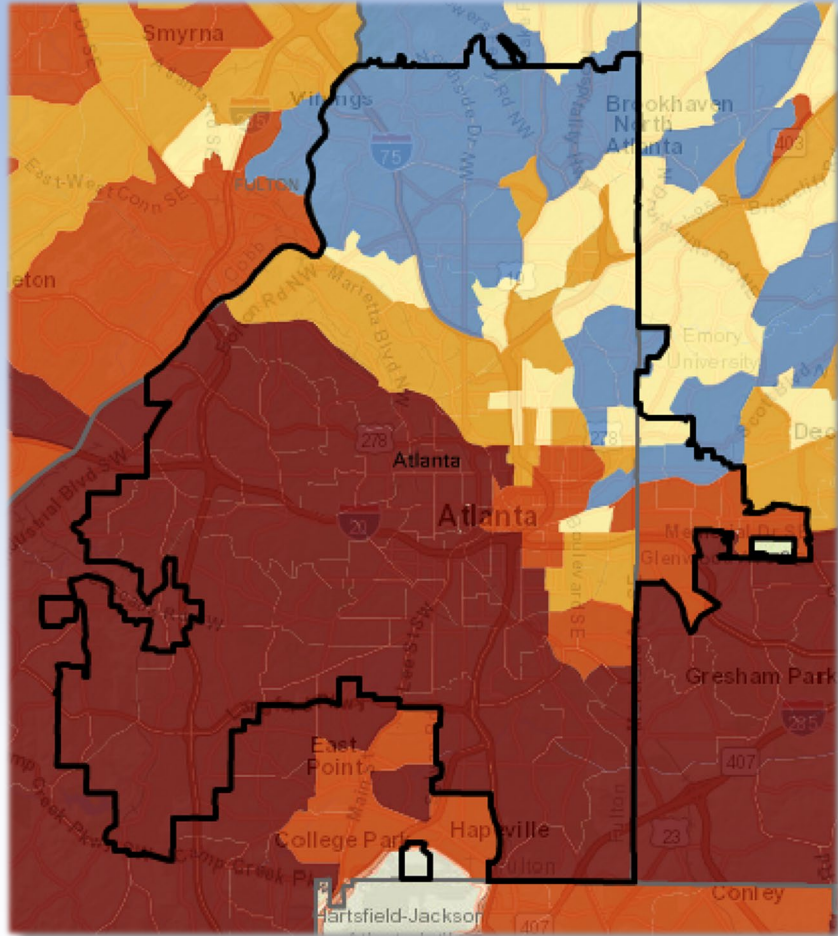
institutions

k-12 schools
higher Ed
non-profits

structures

high school to college
college to work
work to progression

Equity: Atlanta in Black and White



White Atlanta
white pop > 78 percent
black pop < 7 percent

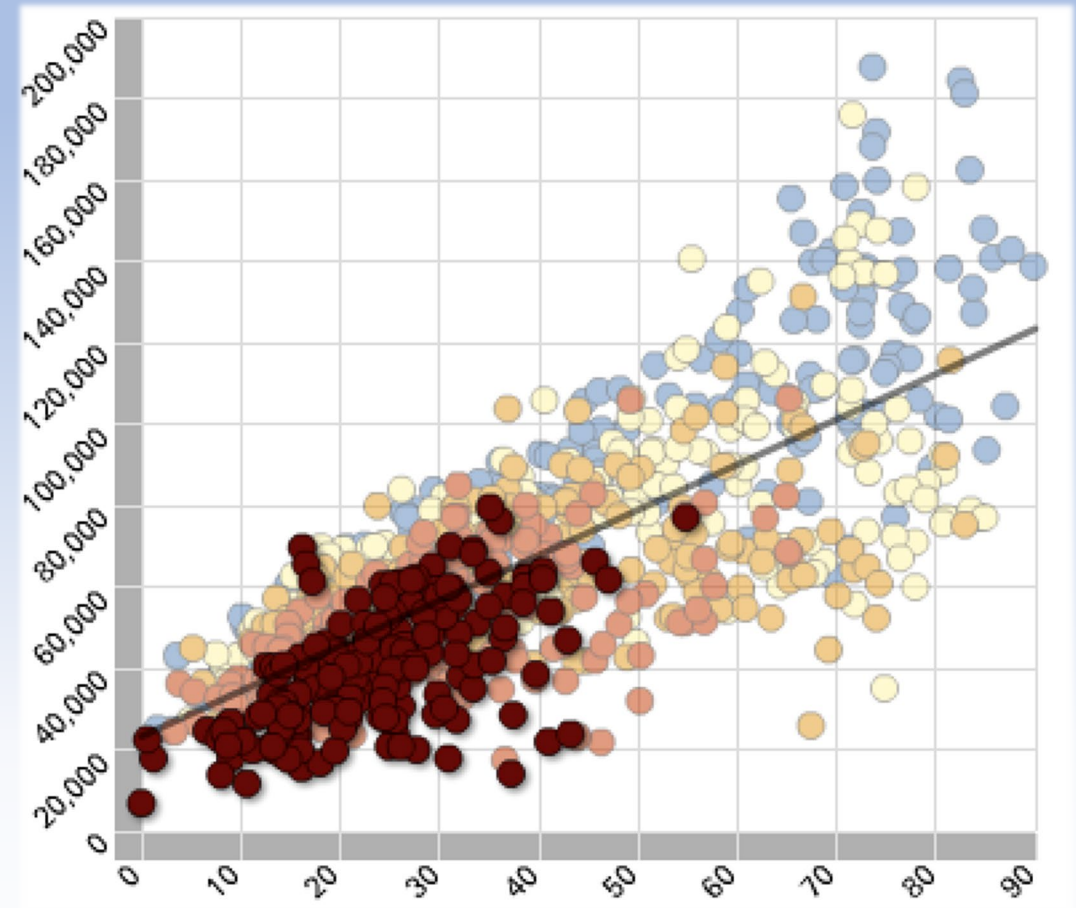
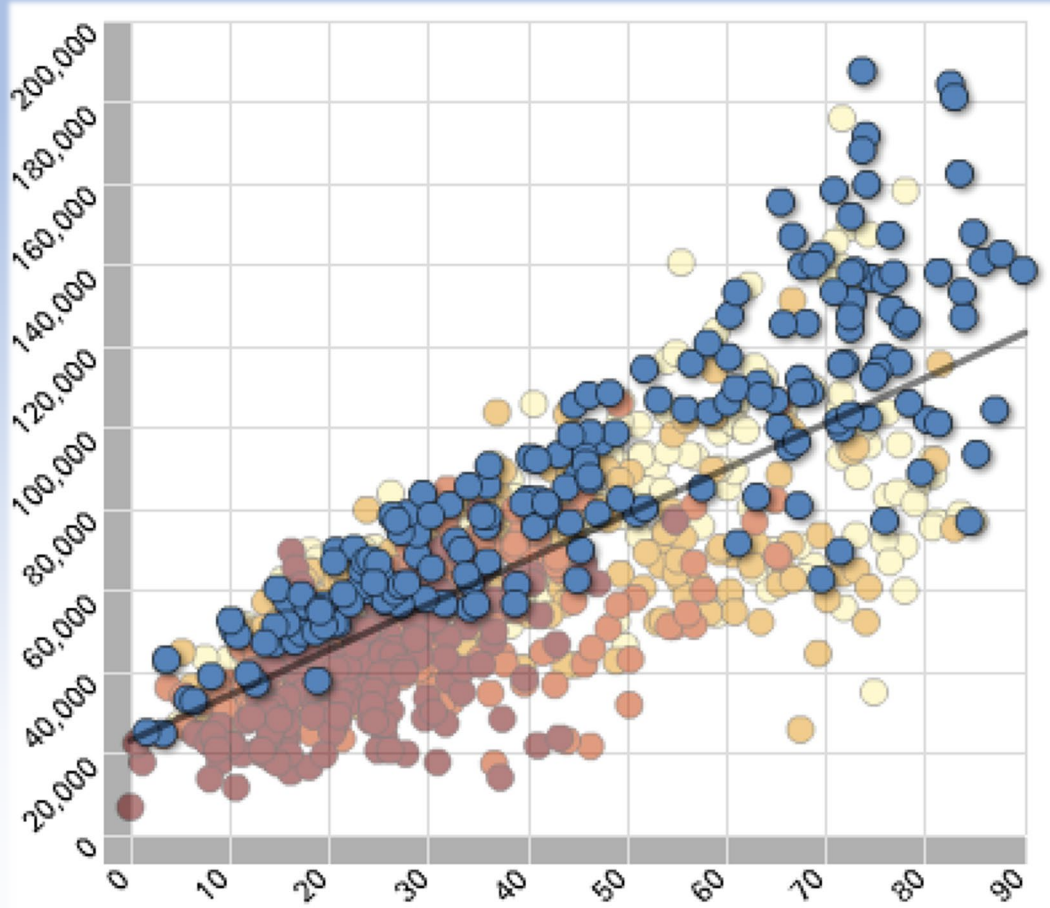


Black Atlanta
black pop > 65 percent
white pop < 14 percent

Equity is not the
same thing as
equality

Equity: College and Poverty

Median household income, 2016



Percent of pop 25 years plus with bachelors degree or better, 2016

Source: [Neighborhood Nexus](#)

What problem are we trying to solve?

Solution can only be achieved
collectively?